



WALL

BELMONDO® Rodeo

Protects horse and wall

- shock-absorbing - protects hooves and legs
- protects the wall
- long life cycle
- less noise in the stable
- attractive wooden planks optics
- easy to cut



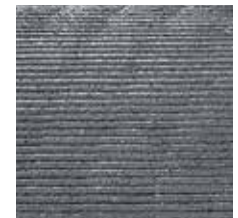
PRÜFNUMMER
201501008



| | |
|--------------------|------------------------------|
| Surface: | wooden planks optics |
| Lower side: | grooves |
| Material: | rubber |
| Thickness: | 11 mm |
| Dimensions: | 1.30 m x 3.50 m |
| Weight: | approx. 14 kg/m ² |
| Border: | straight edges |



wooden planks optics



grooves on lower side

Special dimensions are generally available on request.

All BELMONDO® products are suitable for looseboxes as well as open stables.



Installation: according to BELMONDO® installation instructions

Tolerances: thickness: +3/-2 mm
length/width: +/- 1.5 % (DIN ISO 3302-1 tolerance class M4)
The tolerances also apply within the mat.

The products presented here should only be used for the listed applications. Technical specifications are subject to alterations. All sales are subject to our General Terms and Conditions. Legal basis is the German version of the document.