



LOOSEBOX / LYING AREA

**BELMONDO® Basic**

**Good basic comfort**

- enhanced slip resistance
- heat insulating
- protects hooves and joints
- less noise and less dust exposure contribute to a healthier climate in the stable
- less costs due to less bedding requirements
- solid, vulcanised rubber does not absorb any moisture
- suitable for vehicle traffic\*

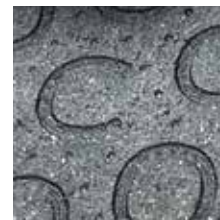
**Surface:** horseshoe profile  
**Lower side:** grooves  
**Material:** rubber  
**Thickness:** 18 mm  
**Dimensions:** 1 m x 1 m  
**Weight:** approx. 20 kg  
**Puzzle shaped edges:** on 4 sides



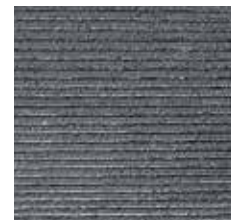
For shoes without pins or studs.



PRÜFNUMMER  
201501001



**horseshoe profile**



**stable groove profile on lower side**

\* can be driven on with standard equipment such as farm yard loader or tractor with authorized pneumatic tyres at the recommended inflation pressure up to max. 4 bar. (Notice: drive with due care and steer in large radius!)

Special dimensions are generally available on request.

All BELMONDO® products are suitable for looseboxes as well as open stables.

Despite good interlocking puzzle pieces, remaining liquid / urine could seep into the seams. To bind fluids, hence, a small amount of absorbent bedding is always required in the loosebox. We also recommend a minimal amount of bedding in the open stable.



**Laying:** according to BELMONDO® laying instructions

**Tolerances:** thickness: +3/-2 mm  
length/width: +/- 1.5 % (DIN ISO 3302-1 tolerance class M4)  
The tolerances also apply within the mat.

The products presented here should only be used for the listed applications. Technical specifications are subject to alterations. All sales are subject to our General Terms and Conditions. Legal basis is the German version of the document.